



**HAJIM**  
SCHOOL OF ENGINEERING  
& APPLIED SCIENCES  
UNIVERSITY OF ROCHESTER



The **Biomedical**

# Engineering Society

*University of Rochester Student Chapter*

VOLUME 6, ISSUE 1

OCTOBER 2010

## Letter from the President of BMES

### Inside this issue:

Letter from the President of BMES	1
A Warm BME Conference	2
Graduate Education Night	3
Bowl-A-Rama!	3
BME Picnic 2010	4
Like Students, Like Professors	4
Professor Spotlight	5
E-Social 2010	5

The Biomedical Engineering Society (BMES) at the University of Rochester is excited to promote the profession of Biomedical Engineering and is looking forward to another successful year. We aim to improve relationships between undergraduates, graduates, faculty, and staff through various programs we sponsor. BMES kicked off the year with our annual Department Picnic, Graduate Education Night, and Meliora Weekend Tours. Also, this year the department, with help from National BMES Scholarships, was able to send six undergraduates to the National Biomedical Engineering Conference in Austin, TX.

We are very excited for the events planned for the rest of the semester. Our Concentration Panel allows freshmen and sophomores to learn about the four different concentrations in BME from upperclassmen. We are also sponsoring a

Pumpkin Decorating Contest where each engineering department competes to produce the most decorative pumpkin. Next semester's events include an Industry Networking Night where undergraduates can talk to various companies from Upstate New York. Last year, we teamed up with the Biomedical Engineering Career Alliance to recruit 11 companies for a day full of speakers, workshops, and networking which drew over 200 students.

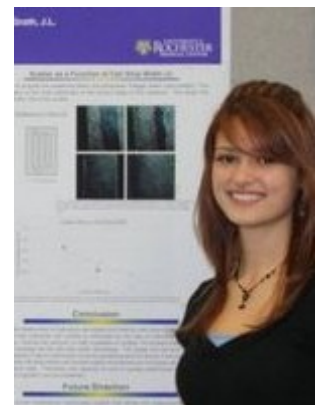
BMES holds open Executive Board meetings every Wednesday at 7:30 pm in Goergen 239. We welcome anyone who is interested and encourage members to join us. Any comments or suggestions for BMES would be greatly appreciated and can be sent directly to me via e-mail or at our weekly meeting.

National membership to BMES has many great rewards on both a national and local level. As a member of

a national academic society, it reflects your dedication to your major, your career, and provides discounts and scholarship opportunities. To learn more, visit [bmes.org](http://bmes.org). As a member of our chapter, you will receive reduced rates for our events and fundraiser merchandise. Membership applications can be obtained from Dottie and should be turned in as soon as possible to start receiving these benefits.

Sincerely,

Kelli Summers  
President, U of R BMES



**Kelli Summers, BME '11**

## BMES Registration!

# Become a Biomedical Engineering

**Register for a year-long  
membership today for  
only \$35! (\$30 National**

### Reasons to Register:

BMES is the ideal place to launch your career in biomedical engineering. We offer special programs and services catered to students beginning their careers in biomedical engineering. From presenting your research to resume-writing workshops to social networking, Biomedical Engineering students have a unique professional home in BMES. Interact online with student social networks. Student Chapters connect you with peers and provide leadership skills as well as scientific and social interactions. Each chapter receives a subscription to Annals of Biomedical Engineering. Check out all the opportunities on the BMES Membership page:

<http://www.bmes.org/mc/page.do?sitePageId=70531>

Membership Registration Form is attached.

## A Warm BME Conference

One of my favorite parts of being involved with BMES is that it gives me the opportunity to travel to the annual National Conference. This year's meeting was in Austin, Texas, and for anyone who has not been to Texas in early October, you're really missing out on some fantastic weather. Inside of the Austin Convention Center, dozens of graduate schools lured undergrads to their tables by giving away free candy, pens, bags, water bottles, frisbees and cowboy hats. BME companies also occupied booths, demonstrating their latest products. Hundreds of research posters lined the main exhibit hall from Thursday morning to Saturday evening. Several of our own undergraduate and graduate students presented their re-

search. For those at the conference presenting for their first time, the poster sessions gave them the opportunity to publicly share their findings. Throughout all three days of the conference, several platform presentations occurred in smaller rooms throughout the convention center. The topics of the talks ranged from Motor Neural Prosthetics to Novel Biomaterials and Scaffolds to Nano to Micro: Fluidic Technologies. The variety of the platform sessions made it possible for nearly everyone to find something of interest.

Thursday night's award ceremony was of particular interest to our BMES chapter. We received the 2010 Student Chapter Commendable Achievement Award for being the second most active and successful chapters in the country. In even bigger news, our department chair, Professor Waugh, was inducted as the new president of national BMES! Once the conference wound down in the evenings, there was enough time to see the sights of Austin. Some highlights were 6<sup>th</sup> street, Segway tours of the city, mechanical bulls, enough barbeque to



last the next month or two, lots of avocados and of course the Texas sun. Overall, the three days we spent in Austin was a perfect mix of academia and experiencing a new place, I could not have asked for more out of my fall break.

- Cassandra Gorman, BME '12



## Graduate Education Night

On Tuesday September 29, the University of Rochester's Biomedical Engineering Society held a Graduate Education Night. A panel of present and former graduate students from Masters and Ph.D programs answered questions about future educational opportunities and career paths after college. Tom Gaboriski, a Ph.D from the University of Rochester, helped found the company SiMPoreInc. He spoke to students about his entrepreneurial pursuits both during and after his Ph.D. Benjamin Danziger, currently a M.S, worked at Johnson and Johnson before returning to graduate school. Ben described why he chose to go to industry first as well as the reasons that brought him to the U of R in search of a Masters. Bran-

don Reese is a M.S student in the Technical Entrepreneurship and Management program. He spoke about the various types of M.S. programs available to students. Amy Lerner, a committee member of our Biomedical Engineering graduate program and professor, spoke about her long, "non-linear" search for a career that included two B.S. degrees before pursuing a Ph.D.

Laura Godwin, a career center counselor, informed students on the practical steps necessary to apply to graduate programs. Len Zheleznyak is a PhD student in Optics, receiving both his BS and MS from the University of Rochester. Len went into industry after receiving his M.S where he found that a Ph.D was neces-

sary to direct a project and make crucial decisions in his company. Andrew Shubin is a MD/PhD student at the University of Rochester who spent a year with NIH after graduating college.

A strong turnout of students took advantage of this event and posed many questions to our panel. Together, the panel members did an amazing job providing insight and advice from their own experiences. Even after the event ended, many members of the panel stayed to talk with students that sought extra information. On behalf of the undergraduate students, I would like to thank the panel for their guidance and personal anecdotes.

- Brian Dixon, BME '12

## Bowl-A-Rama!

Taking advantage of \$1 games, several BME undergrads and a grad student ventured out to Bowl-A-Roll instead of staying in to do work on a Sunday night. Ready to handle his business, Brian Dixon came prepared with a personal bowling ball. On the other end of the athletic spectrum, senior Tedi Begaj's game plan seemed to consist of throwing the ball as hard as possible. Each gutter ball motivated Tedi to throw it even harder. Whether out of frustration or for the other student's entertainment, this strategy couldn't score him a strike the entire night. A friendly challenge arose between the two lanes during the first game which dissolved into silly antics by the second game. Dan Stratz led the way with some of the craziest bowling

moves seen by mankind while Kelli Summers and Brett Sternfield competed to see who could bowl the fastest. The event was a blast and as long as \$7 pitchers of Yeungling are on tap, BME's will continue to flock to the waxed lanes.

- Christopher Schmitt, BME '12



## BME Picnic 2010

This year torrential rain and thunderstorms threatened to ruin our annual BME Department Picnic. Fortunately for us, Donna “Ready for Anything” Porcelli had a backup plan. By 6:00pm, checkered table clothes and smells of pulled pork, brisket and cornbread filled Munnerlyn Atrium. Ravenous students and faculty lined up, ready to get their fix of Dinosaur BBQ. Per usual, a non BME here and there tried to infiltrate our ranks. However Dottie was on the prowl, a nerf gun at the ready in case anyone caused trouble.

Nearly 200 students and faculty attended the picnic, intermingling while enjoying their meals and cold beer. The picnic has always encouraged students from across concentrations, cliques and years to mix with each other and their professors. Even the occasional graduate student was spotted in between their routine dash from the lab to the Blue Line. There

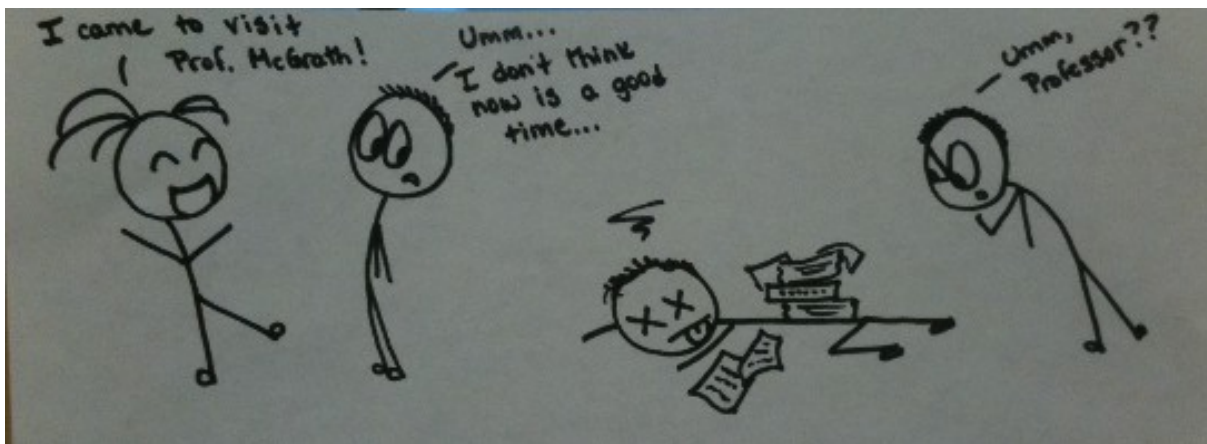
was only one casualty of the rain; our traditional faculty vs. student softball game. Fate seemed to spare the aging professors from another humiliating loss to the more agile and emmetropic undergraduate/graduate class. It seems we will have to wait until next year to determine whether experience can top pure athletic prowess.



The large turnout gave testament to how much our undergraduate department has grown since its inception 10 years ago. Hopefully, the many young faces in the crowd as well as our committed faculty and staff will continue to see this department flourish and become the top BME program in the country!

- Brett Sternfield, BME '11

## Like Students, Like Professors



# Faculty Spotlight: Professor Benoit

Last year we discussed how Professor Benoit (pronounced **bihn - waa**) had been abducted by the United States government, who were curious about her the biological composition of her quadriceps. The story of her capture begins in August of 2007 when a few FBI agents had been sent on a secret mission to identify an ice cream store that sold human meat. Danielle Benoit had been attending this store for decades, hoping to utilize the human meat as a replacement for both human growth hormone and blood doping. As she walked in on the day of August 17<sup>th</sup>, few knew it would be her last time eating forearm-sprinkled vanilla ice cream with a spruce of GO-Lean tibia bone Crunch. The agents quickly recog-

nized her almost perfect quadriceps as she walked to the counter where Betty was working ever so slowly. Before she could even utter the phrase “How is it dernin?” agent Little Tommy had subdued her with a choke hold and took her into custody.



barrage of cutting edge diagnostic techniques developed at the University, but her immaculate quads would not give up their secrets. After two years of intense torture, they decided a worse punishment for her was to teach the uncontrollable BME students. Perhaps then she would relinquish the formula to developing the best quads in the world. How interesting that her pursuit of the perfect squat led her down the path toward a professorship at arguably the most specialized university in biomaterials.

Rumors spread about Danielle Benoit’s disappearance as she was never seen again in her hometown. The FBI transported her to the University of Rochester, where only the top and most excellent research is conducted. For weeks they analyzed her, using

-Tedi Begaj, BME '11

\*Note: This article is purely fiction and should not be mistaken for the real biography of Professor Benoit



## September UR Hajim E-Social 2010!